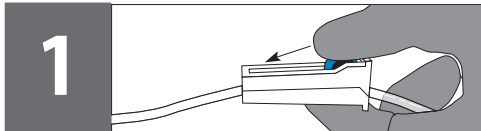




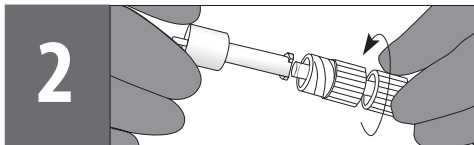
Jigsaw Medical™

Solving the healthcare puzzle one product at a time

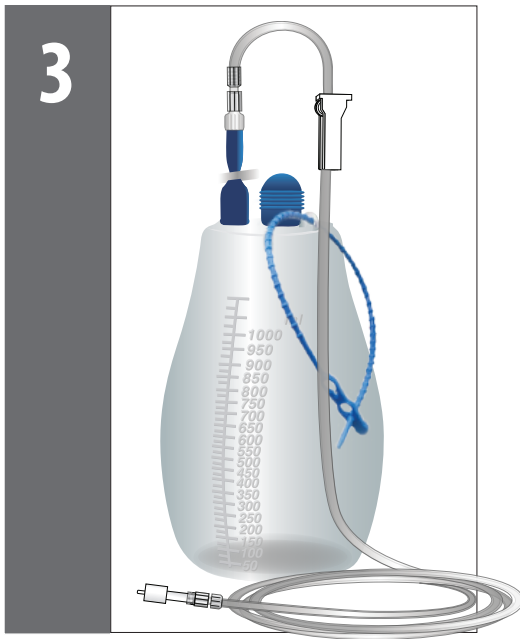
Adapter & Cap Instructions



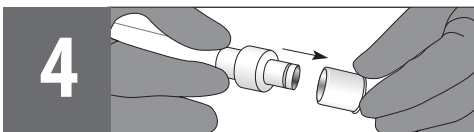
1 Close the roller clamp on the drain line tubing so that it is completely closed.



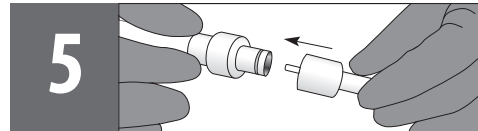
2 Attach the White Adaptor to the drain line by pushing the ends together and turning the locking collar clockwise.



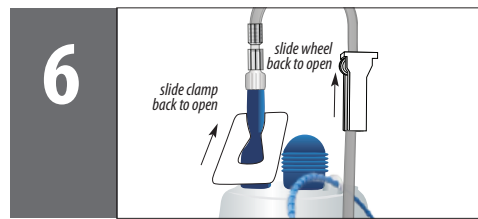
3 Attach drain line to bottle.



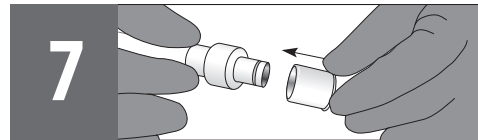
4 Remove cap from catheter.



5 Press fit the adaptor end of the drain line into the catheter tip.



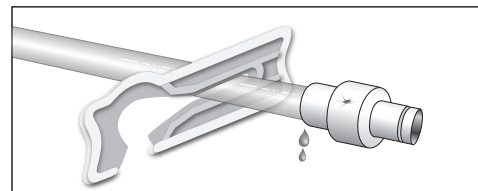
6 Open clamp on bottle and drain line. Adjust flow as necessary.



7 To disconnect the drain line; close all clamps, separate the adaptor from the catheter, attach new sterile cap to catheter tip.

If a second bottle is needed to complete the drainage, open a second sterile Safety Drain Line Adaptor and a second Sterile Bottle.

Do Not Connect to a Drain Line Adaptor that has already been used.



Should your catheter be accidentally punctured or if the valve is leaking. Slip the white emergency clamp over the catheter between the leak and the patient and push the catheter completely into the small end of the clamp to close off the catheter. Once you have closed off the catheter contact your physician or care provider for further instructions.

www.jigsawmed.com

1012 Airpark Dr., Suite 1, Sugar Grove, IL 60554
Tel: 630-587-0019 | Fax: 630-524-9088
Email: Fax@jigsawmed.com